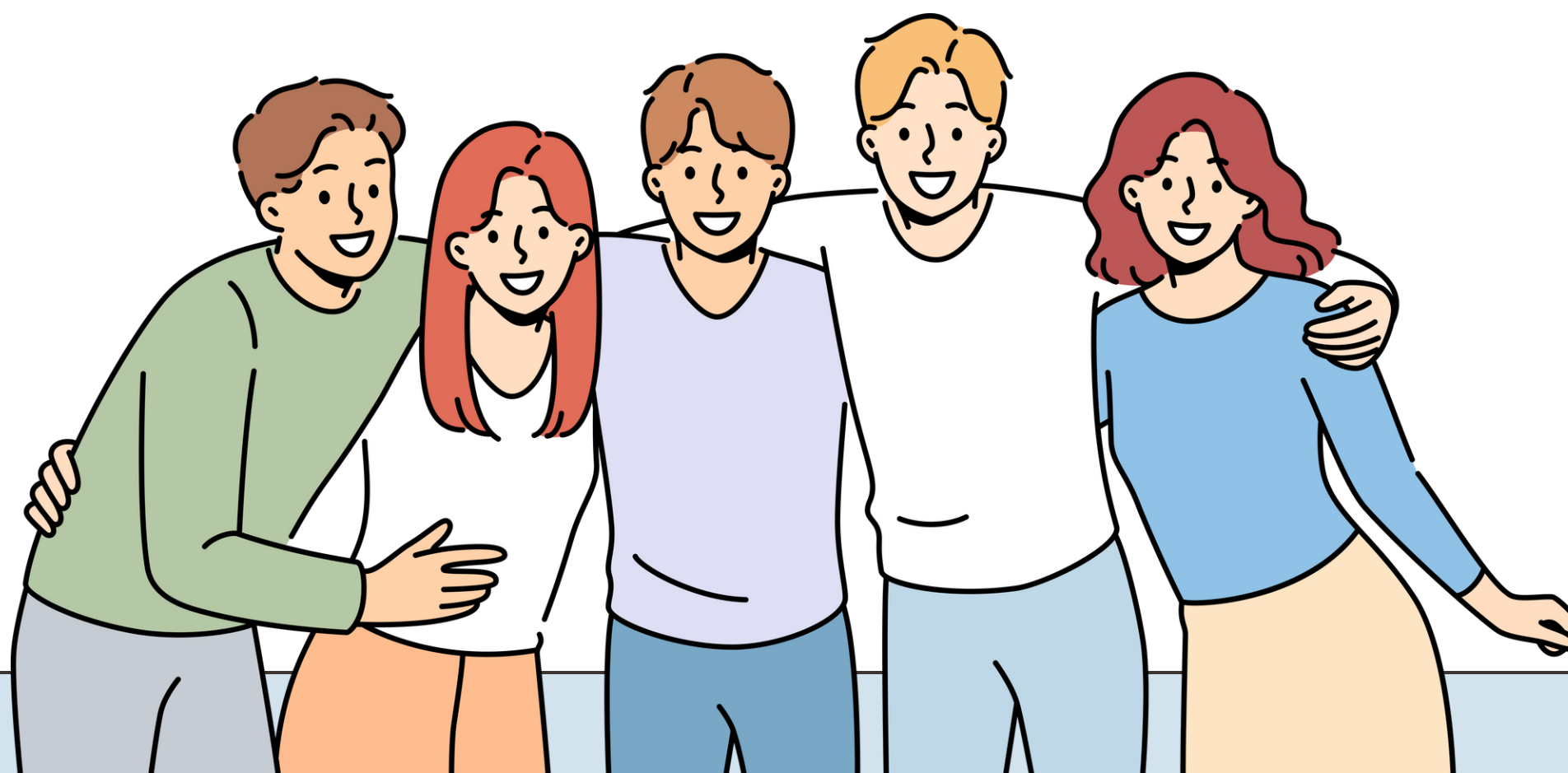




# Personality

*E-SPACE GROUP CLASS*



# Warm-up activity

Choose the correct adjective

Martin is good at all subjects at school, he's very \_\_\_\_.

- a. sociable
- b. intelligent
- c. reliable



# Warm-up activity

Choose the correct adjective

Jack is very \_\_\_\_\_. He never says  
“Please.” and “Thank you.”.

- a. confident
- b. rude
- c. polite



# Warm-up activity

Choose the correct adjective

Our family is very \_\_\_\_\_. We often go cycling at the weekend.

- a. sporty
- b. funny
- c. lazy



# Warm-up activity

Choose the correct adjective

My mom never gets angry.

She's always \_\_\_\_ .

a. lively

b. bossy

c. calm

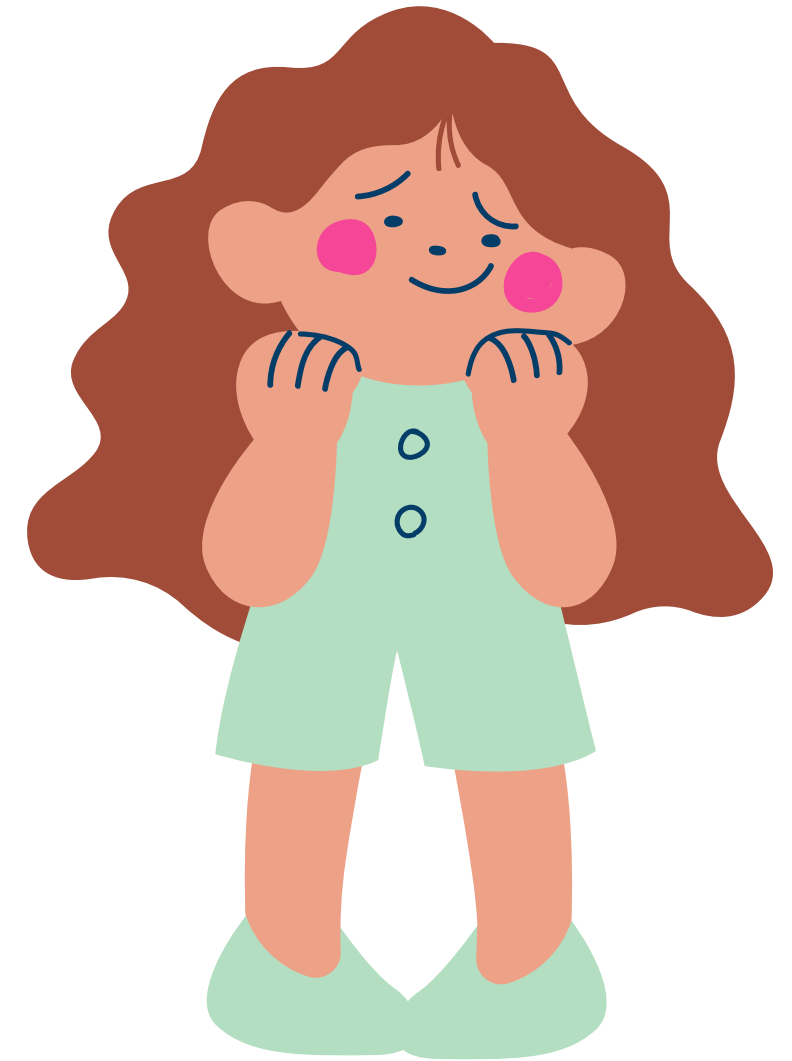


# Warm-up activity

Choose the correct adjective

She's very \_\_\_\_, so it wasn't easy for her to make new friends when she first moved here.

- a. clever
- b. polite
- c. shy



# Warm-up activity

Choose the correct adjective

My friends are very \_\_\_ - we're keen on having parties.

- a. sociable
- b. selfish
- c. quiet



# Conversation Questions

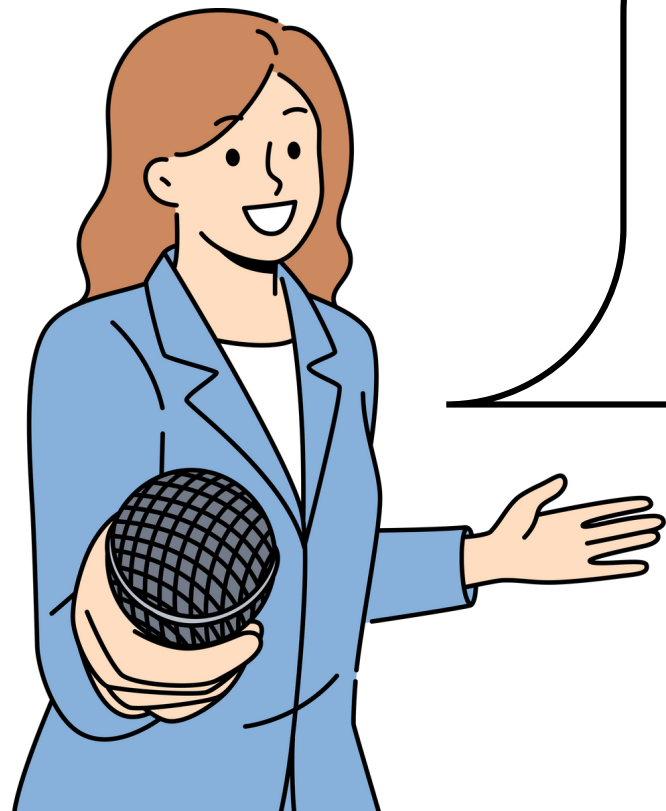
1. How would you describe yourself?
2. In which ways are you similar to your friends?
3. Are you similar or different to your brother(s)/sister(s)?



# Discussion Topic

**Describe a feature of your personal character that you find important.**

- What it is
  - Is it a common characteristic
  - How it is helpful to you
- And explain why it is important to you.



THANK YOU

